

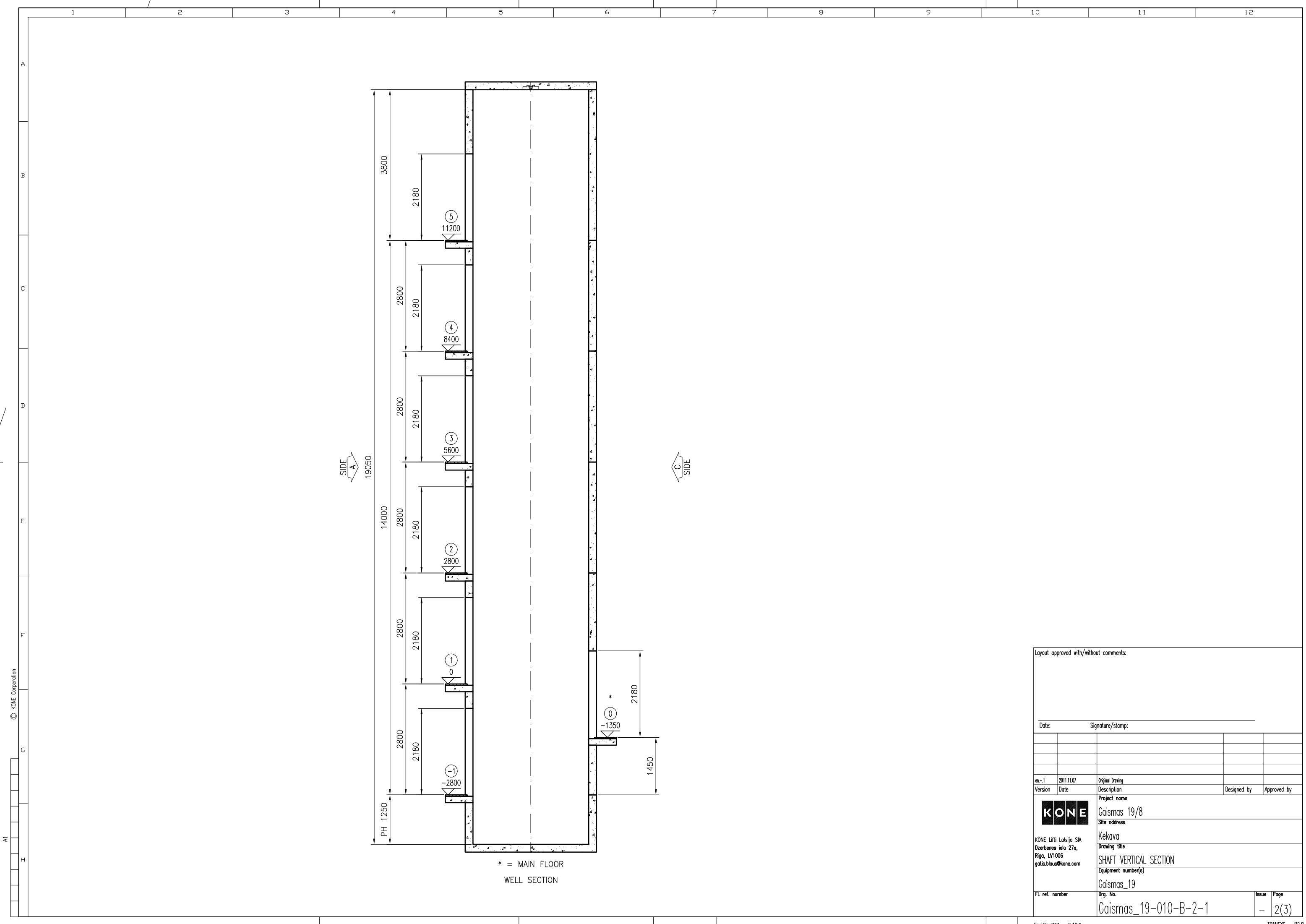
NOTE:
DUE TO THE INSTALLATION METHOD THE
PLACEMENT OF THE EYES IS CRITICAL.

NOT FOR MANUFACTURING
ONLY AS DIMENSIONAL REFERENCE
LIFTING EYE STRENGTH IS UNDER
BUILDER RESPONSABILITY.

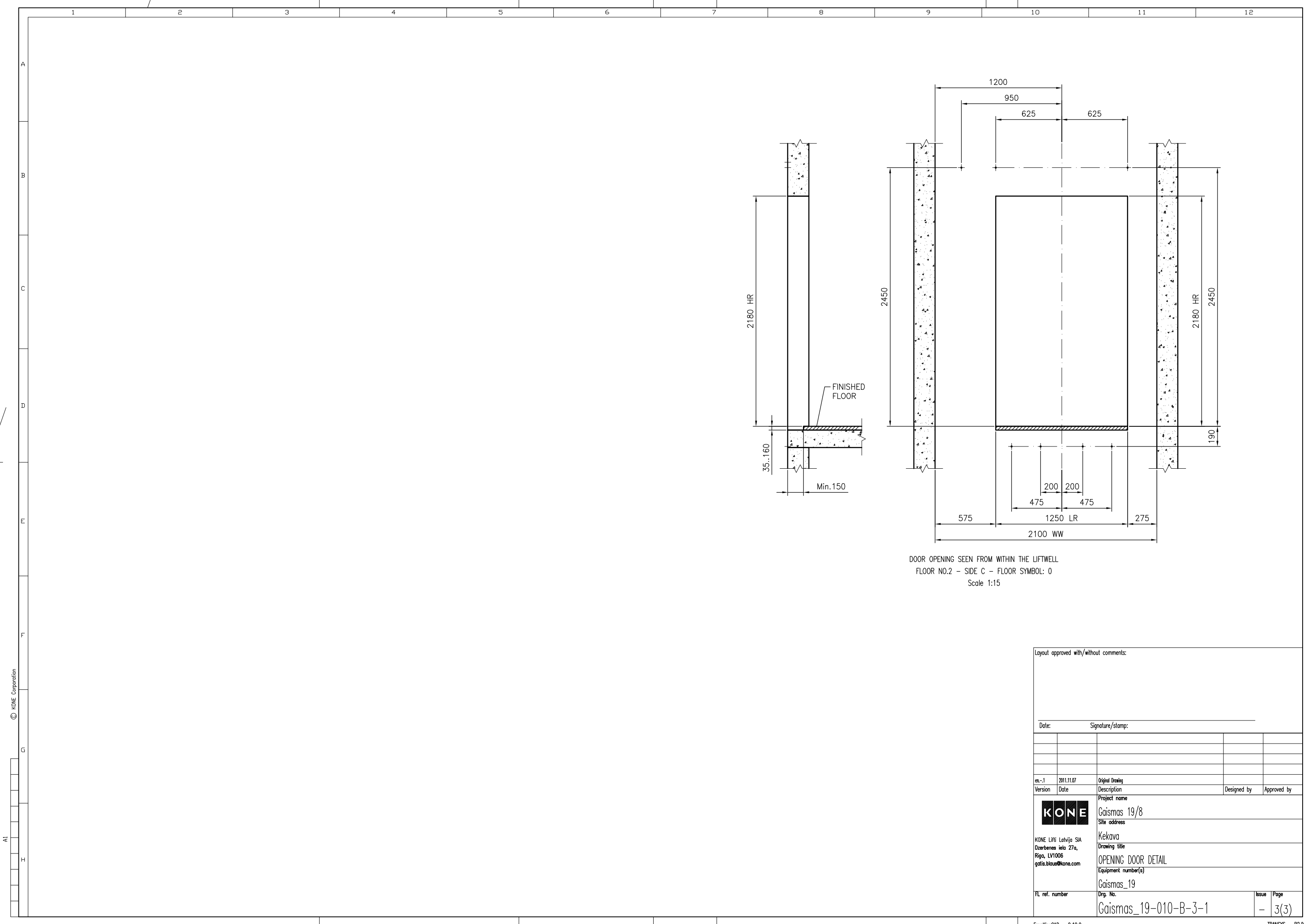
LIFTING EYES CAPACITY MUST BE
CERTIFIED BY BUILDER ACCORDING
TO LOCAL REQUIREMENTS.

REQUIRED HOIST TYPE AND CAPACITY
X750 3:1 OR X1000 2:1 OR X2000 2:1

MAXIMUM FORCES TO GUIDE FIXING POINTS					
Equipment number(s) Gaismas_19					
	Load	Value (kN)	Value (kN)	Value (kN)	Value (kN)
	P	4.8			
	S	3			
	T	4.8			
MAXIMUM CAR AND COUNTERWEIGHT GUIDE FIXING REACTION LOADS ON SHAFT					
Equipment number(s) Gaismas_19					
	Load	Value (kN)	Value (kN)	Value (kN)	Value (kN)
	Fx car	2.7			
	Fy car	3.1			
	Fz car	2.2			
	Fx cwt	2.7			
	Fy cwt	3.1			
	Fz cwt	1.7			
Note:					
- Fx applies to two fixings (per guide) but in opposite directions. - Fy applies to one fixing (per guide) at a time. - Fz (vertical) applies to all fixings.					
MAXIMUM REACTION LOADS ON PIT FLOOR					
Gaismas_19					
Load	Value (kN)	Value (kN)	Value (kN)	Value (kN)	
RP1	112				
RP2	87				
RP3	53				
RP4	17				
RP5	-				
RP6	-				
Note:					
Reaction loads RP1...RP6 on the pit bottom are not simultaneous.					
MAIN TECHNICAL SPECIFICATION					
Equipment number(s) Gaismas_19					
Safety regulations	EN81_1				
KONE product type	GW-BW13/05				
Load type	Passenger				
Rated load	1275 Kg				
Number of persons	17				
Rated speed	.5 m/s				
No. of stops/landing doors	7/7				
Travel	14000 mm				
Layout approved with/without comments:					
Date: Signature/stamp:					
en-1 2011.11.07 Original Drawing					
Version	Date	Description	Designed by	Approved by	
Project name					
Gaismas 19/8					
Site address					
Kekava					
Drawing title					
REACTION FORCES - LIFTING EYES PLACEMENT					
Equipment number(s)					
Gaismas_19					
FL ref. number					
Drg. No. Gaismas_19-010-B-1-1					
Issue Page					
- 1(3)					

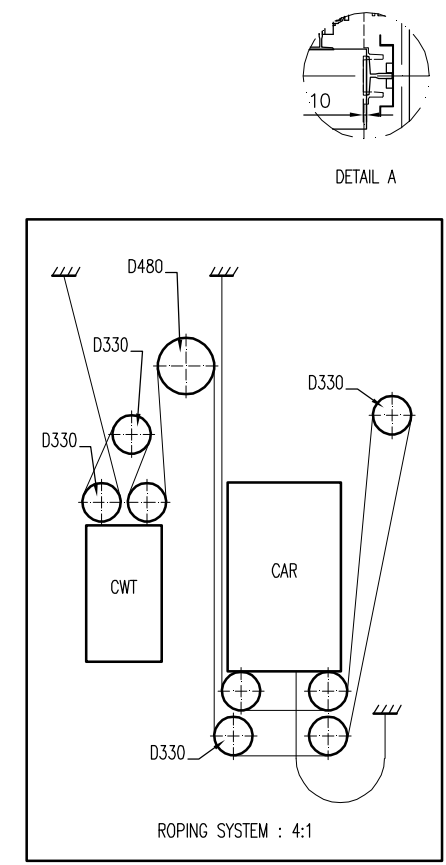
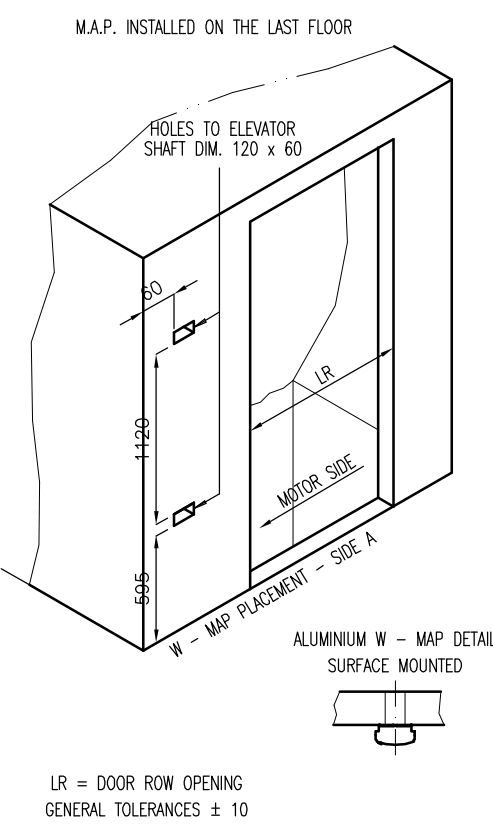
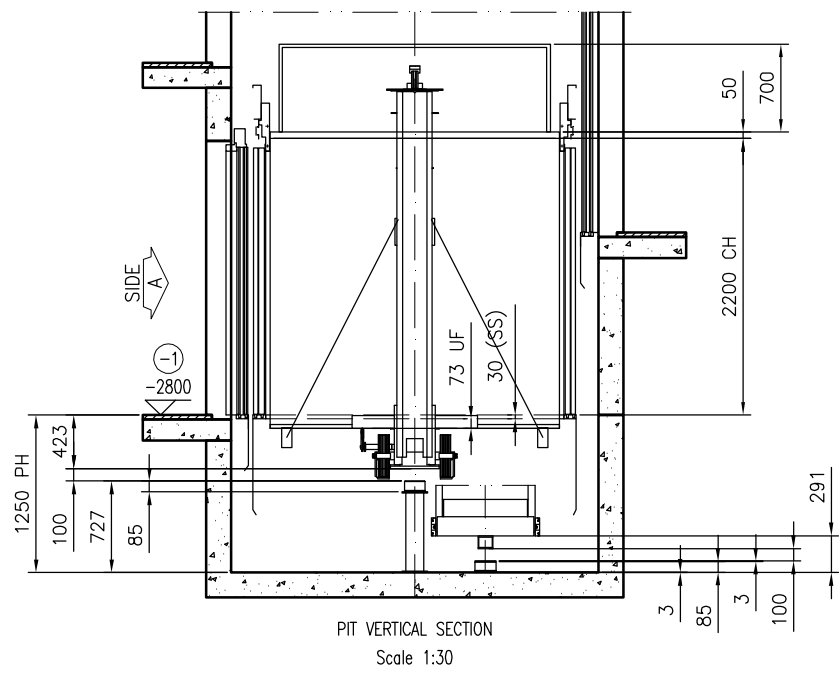
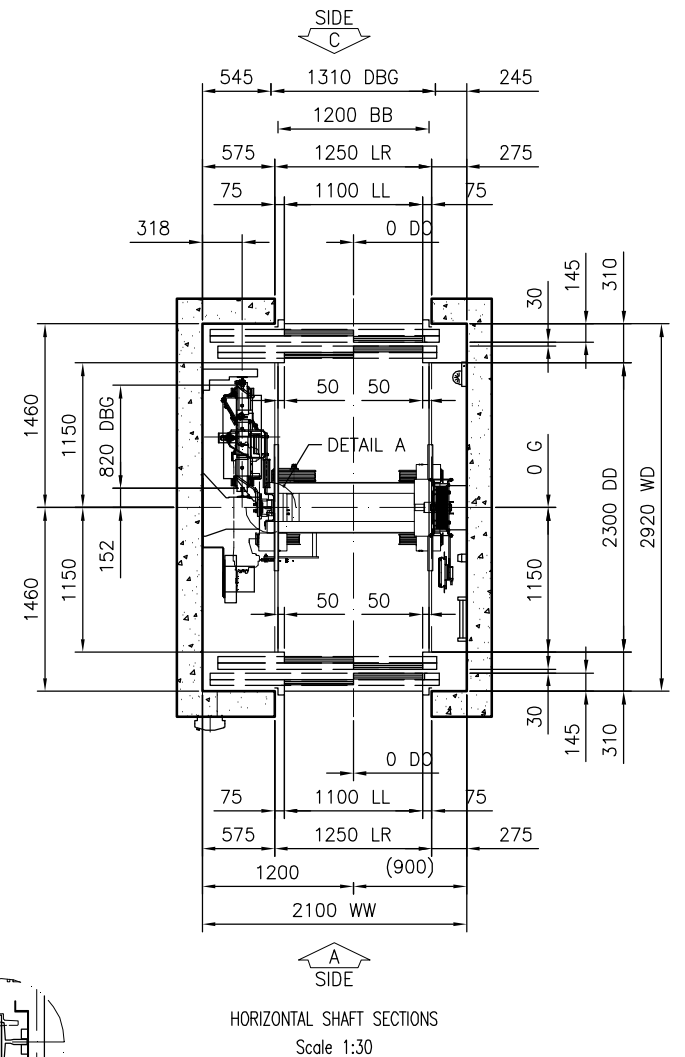
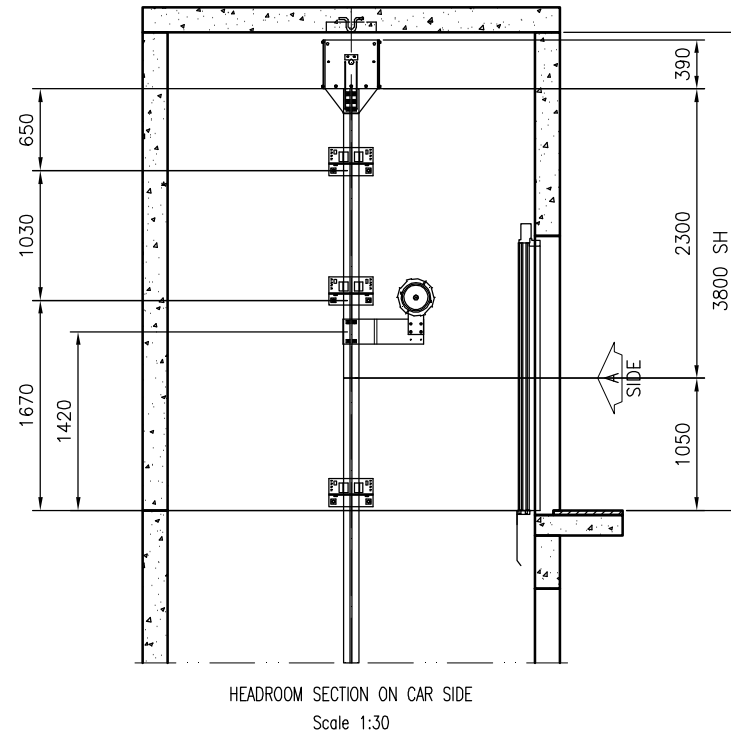
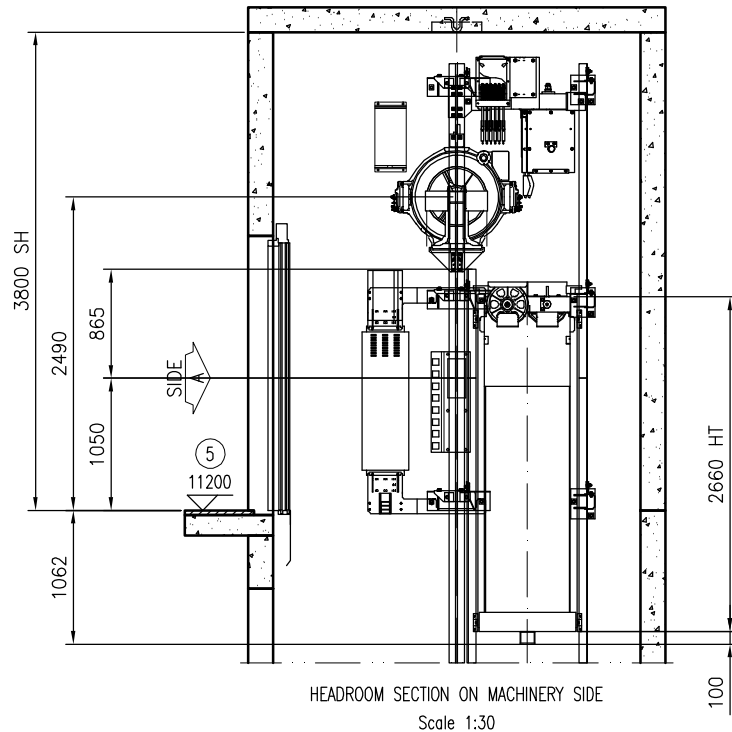


Layout approved with/without comments:				
Date: _____ Signature/stamp: _____				
en.-1	2011.11.07	Original Drawing		
Version	Date	Description	Designed by	Approved by
		Project name		
		Gaismas 19/8		
		Site address		
		Kekava		
		Drawing title		
		SHAFT VERTICAL SECTION		
		Equipment number(s)		
		Gaismas_19		
FL ref. number	Drg. No.		Issue	Page
	Gaismas_19-010-B-2-1		-	2(3)

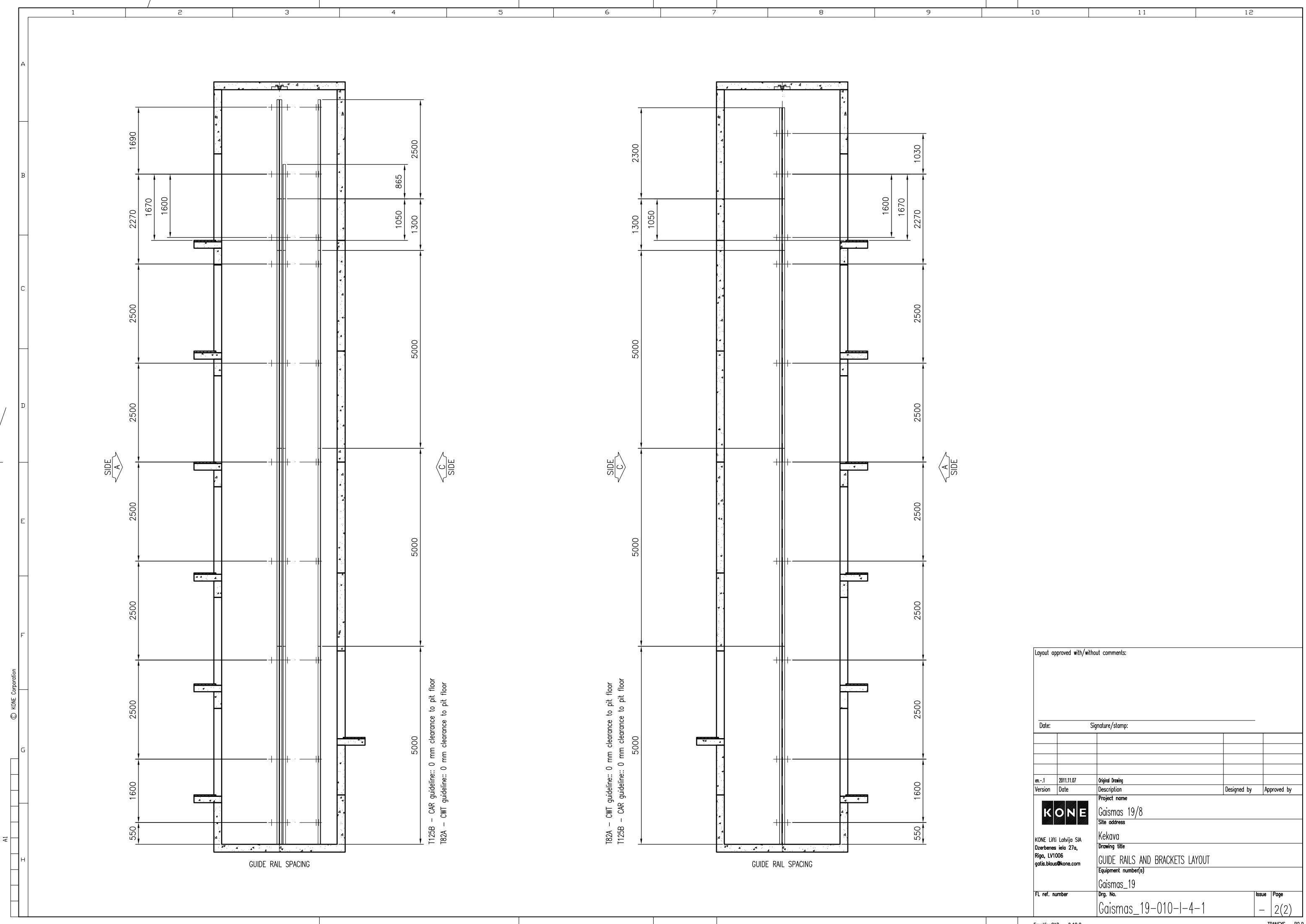


DOOR OPENING SEEN FROM WITHIN THE LIFTWELL
FLOOR NO.2 - SIDE C - FLOOR SYMBOL: 0
Scale 1:15

Layout approved with/without comments:				
Date: Signature/stamp:				
en.-1	2011.11.07	Original Drawing		
Version	Date	Description	Designed by	Approved by
		Project name		
		Gaismas 19/8		
		Site address		
		Kekava		
		Drawing title		
		OPENING DOOR DETAIL		
		Equipment number(s)		
		Gaismas_19		
FL ref. number	Drg. No.	Gaismas_19-010-B-3-1		Issue Page
				- 3(3)



MAIN TECHNICAL SPECIFICATION				
Equipment number(s)		Gaismas_19		
Safety regulations		EN81_1		
KONE product type		GW-BW13/05		
Load type		Passenger		
Rated load		1275 Kg		
Number of persons		17		
Rated speed		.5 m/s		
No. of stops/landing doors		7/7		
Travel		14000 mm		
Layout approved with/without comments:				
</				



© KONE Corporation

A1

H

G

T

T

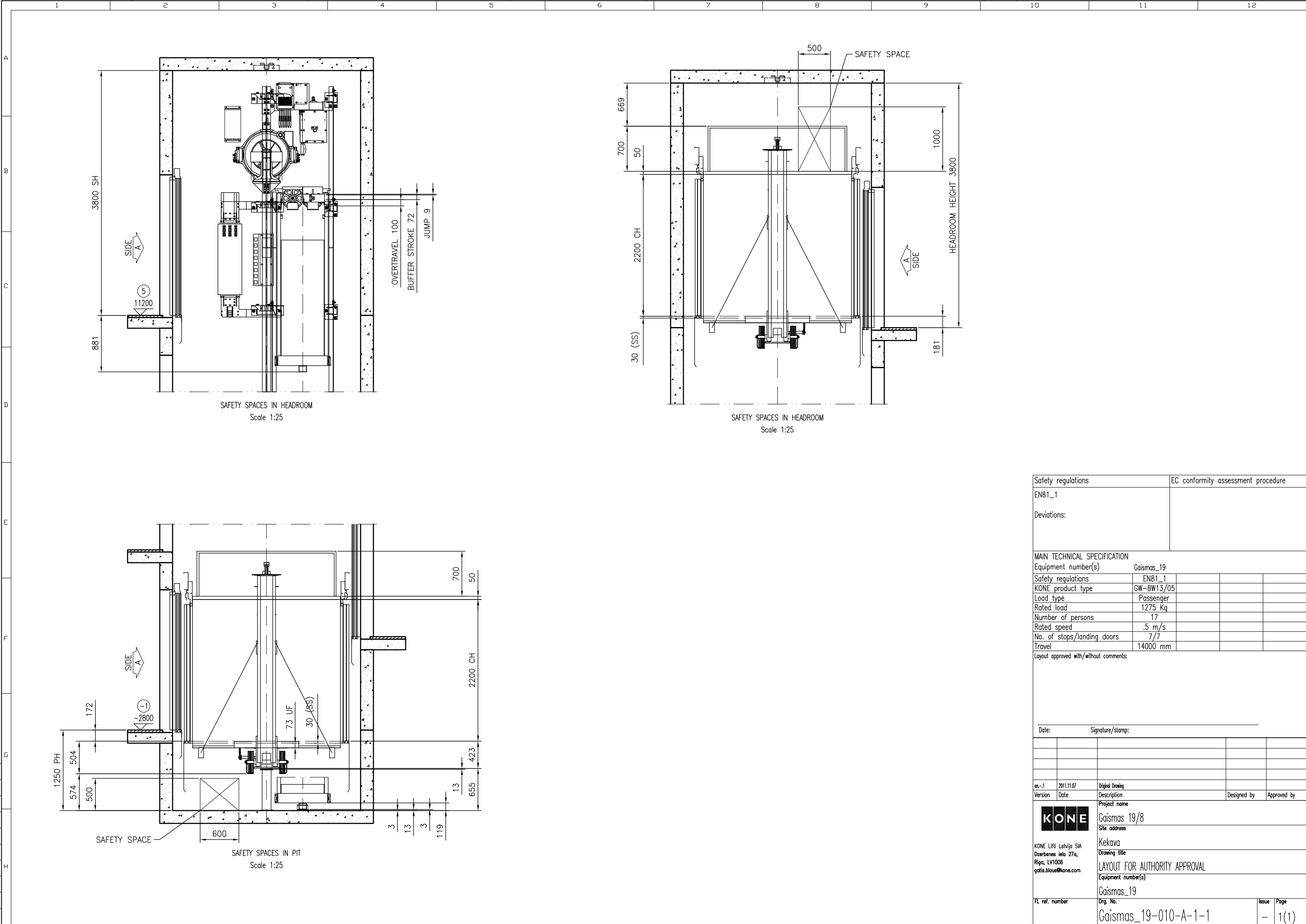
D

C

B

A

Layout approved with/without comments:				
Signature/stamp:				
en-1	2011.11.07	Original Drawing		
Version	Date	Description	Designed by	Approved by
		Project name		
		Gaismas 19/8		
		Site address		
		Kekava		
		Drawing title		
		GUIDE RAILS AND BRACKETS LAYOUT		
		Equipment number(s)		
		Gaismas_19		
FL ref. number		Drg. No.		Issue Page
		Gaismas_19-010-l-4-1		- 2(2)



Safety regulations		EC conformity assessment procedure		
EN81_1				
Deviations:				
MAIN TECHNICAL SPECIFICATION				
Equipment number(s)		Gaismas_19		
Safety regulations	EN81_1			
KONE product type	GW-BW13/05			
Load type	Passenger			
Rated load	1275 Kg			
Number of persons	17			
Rated speed	.5 m/s			
No. of stops/landing doors	7/7			
Travel	14000 mm			
Layout approved with/without comments:				
Date: _____ Signature/stamp: _____				
en.-1	2011.11.07	Original Drawing		
Version	Date	Description	Designed by	Approved by
		Project name		
		Gaismas 19/8		
		Site address		
		Kekava		
		Drawing title		
		LAYOUT FOR AUTHORITY APPROVAL		
		Equipment number(s)		
		Gaismas_19		
FL ref. number	Drg. No.		Issue	Page
	Gaismas_19-010-A-1-1		-	1(1)